



BI-MONTHLY NEWSLETTER

September-October 2019

Website: www.midatlanticpastelsociety.com

CALENDAR OF EVENTS

Member Meeting

Friday, September 13, 2019

Crossroads Art Center, Classroom #1

2016 Staples Mill Rd

Richmond, VA

12:30 pm - 3:30 pm

MAPS Board Meeting

Monday, Oct. 14, 2019

Location TBD

1:00 pm to 3:00 pm

Exhibits

Cultural Arts Center at Glen Allen

3rd Annual Judged Exhibit

Lyn Asselta, Judge

Sept 19 – Nov 17, 2019

Workshops

Emily Christoff -Flowers – Portraits,

using Verdaccio method

Sept 7, 2019, 10:00 am to 5:00 pm

Lyn Asselta – “Exploring the

Expressive Landscape”

Nov 1-3, 2019

Hampton Inn, Richmond/VA Center

**Welcome to
Fall!**

FROM THE PRESIDENT'S CORNER

Hard to Believe

It's hard to believe, but the MidAtlantic Pastel Society will be starting its **fifth** year at our September 2019 meeting. The reasons we have been so successful as an organization are a result of all that we offer to our members: fellowship with other artists, opportunities to learn new techniques and expand our skills through educational programs and workshops, and exciting exhibit opportunities.

I am looking forward to the informative programs that Janet Visser, our new Vice President/Program Chair, has planned for us starting with Allen Phibbs, Life Coach: *Discover Your Inner Dreams* in September. See a list of the upcoming programs for the year on our website at <https://www.midatlanticpastelsociety.com/programs.html>

I'm also looking forward to the exciting workshops that our Workshop Chair, Joan Dreicer, has lined up for the coming years, starting with Emily Christoff-Flowers' one day Portrait Workshop in September and Lyn Asselta's landscape workshop in November. Even more workshops are in the works and are listed on our website at

<https://www.midatlanticpastelsociety.com/workshops.html>

And don't forget our annual judged exhibit at the Cultural Arts Center at Glen Allen. Lyn Asselta will judge it while she is in town to teach the workshop, and monetary prizes will be awarded.

Details about this exhibit are on our website, too, at

<https://www.midatlanticpastelsociety.com/exhibitions.html>

Unfortunately, we still do not have an exhibit chair to head up future exhibits after the one at the Cultural Arts Center. Without someone(s) willing to step into that role, we will not be able to plan and hold future exhibits. Several of us have experience in this area!

(continued on page 4)

PROGRAMS AND MEETINGS

2019/20 SCHEDULE

Friday, Sept. 13th	Allen Phibbs, Life Coach: Discover Your Inner Dreams
Saturday, Nov. 2nd	Betsy Kellum: Becoming a Master Pastelist with PSA & Master Circle Member in IAPS
Friday, Jan.10th	Michael McGurk: Jurying PSA's Enduring Brilliance Annual Exhibition; MAPS Judged Exhibit Awards Recipient Review
Saturday, Mar. 14th	Marjorie Perrin, VMFA Instructor: Balancing Neutrals with Color in Landscapes
Friday, May 8th	Art Supply Swap; Members Share Inspiration

All meetings will be at Crossroads Art Center, Classroom 1
2016 Staples Mill Rd, Richmond, VA 23060
12:30 – 3:30 pm

Light refreshments will be provided

Friday, Sept. 13th “Discover Your Inner Dreams” with Allen Phibbs, Life Coach

Crossroads Art Center – Classroom 1 – 2016 Staples Mill Rd, Richmond, VA 23060
12:30 – 3:30 pm

Allen Phibbs, a Life Coach with the John Maxwell Group, will help us discover our inner dreams towards becoming more creative and overcoming obstacles in our daily lives while being creative.

Allen Phibbs is an Executive Director of The John Maxwell Team who is certified to facilitate, speak, train and coach individuals and groups in the areas of leadership development, professional skills and personal growth. Learn more about Allen at www.johnmaxwellgroup.com/allenphibbs.

Come join us!



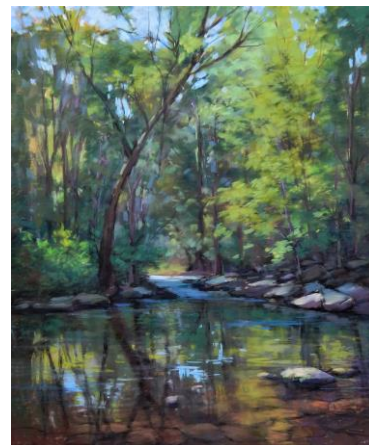
Julia Lesnichy

Plein air painting with pastels

I love to use pastels for alla prima painting outdoors as they allow me to pick out the colors I see in a landscape right away without mixing them like with oil colors and apply them on paper with broad strokes, which makes a painting more dynamic. I use mostly Unison soft pastels, some Terry Ludwig and hard Nupastels for details. I paint often on Uart 400, though I really prefer Pastelmat paper, as I personally feel that Pastelmat holds pastels better and can even take underpainting washes better without warping. For large works en plein air I use toned sheet of Pastelmat of size 19.5x27.5. For smaller works and plein air sketches I often use Uart, which I rarely tone down, but if I do I use a wash of warm underpainting color like burnt sienna, warm orange and sometimes even red. If a landscape is a sunlit scene with light planes prevailing it is better to use a warm underpainting of a medium value. The dark value of any color makes the whole painting too dark. If I paint a landscape where dark planes prevail I may go for a cooler underpainting of a dark value. But basically, I paint on undertoned Uart 400, on which many colors look more brilliant.

Usually I start a painting with blocking in darks. I don't do a preliminary drawing, as I basically draw with pastels. I don't do any small sketches either. It takes a lot of time and the light is changing fast on the site. I may correct the composition and details right in the process of painting. Before I start a painting, I think about the composition and if any elements can be removed or added to it to make it more interesting, about the center of interest and where the strongest contrast lies. Then I pick out the pastel sticks for this particular landscape, I choose colors for the dark and light planes and I work from the dark planes to the light ones. It is important to have a certain palette of colors for a particular landscape, as it helps an artist to be consistent in terms of color. I don't blend, but tend to break colors, applying them in broad strokes first. At the initial stage I define color masses with strokes and keep them very simple. I constantly compare the colors and values while painting making sure the values are correct. At the next stage, I add more colors with smaller dabs and strokes working within a color mass. For instance, I make a shape of a tree not only with the help of values but colors as well. I borrowed this approach from Cape Cod School of Art in Provincetown, Ma, where I took a workshop with Lois Griffel, a student of an outstanding American impressionist artist and instructor Henry Hensche.

(continued on Page 4)



FROM THE PRESIDENT’S CORNER (continued)

and we are willing to train you. Please talk to me at the September meeting, or contact me at hcullinan@gmail.com if you’d like to discuss this opportunity. You are needed!!

Another thing that is hard for me to personally believe is that this is the beginning of my last year as your President. According to our by-laws, officers cannot serve more than two successive terms in the same office and I will complete my second term in August 2020. It will be a big change for me to step down from the role of your President, but one that I have found extremely rewarding and a real highlight in my artistic career.

I’m looking forward to seeing you at our September meeting!

Carol Cullinan, President

MEMBER SPOTLIGHT (continued)

At the final stage, I may keep on working more on details trying not to overwork the painting. Some details are important, others may be omitted. I try to do as much as possible on the spot, but often add final touches in the studio. But any painting I do with pastels I start outdoors. It is essential to start a painting on the site, not from a photograph, even if you have enough experience working with pastels. When working outdoors I am always inspired by the subject of my painting and I see colors and values better. If I am stuck with a painting, I make sure the composition and values are fine. I may also go back to the scene and finish the painting there, if I don't know what to do with it. This experience often pays off and I come up with a better work.

I constantly challenge myself and I do not limit myself to doing only landscapes – I also do still life, florals and figurative work. I love to paint pets, farm animals, like cows and goats, fish, chicken and people on a beach. I love to draw and including these subjects in my work helps me to hone my drawing skills. I paint these subjects from photos, but I observe them a lot before starting to work on them. For instance, I did a pastel painting of my cat lying in the sun on the terrace from a picture I had taken before but I had also been observing her in the sunlight for a while. If you can paint light and shadow with color you can paint basically everything. Observation and development of a sense of color is a very powerful tool for an artist.

CURRENT EXHIBITS

**Cultural Arts Center at Glen Allen
3rd Annual Judged Exhibit
Gumenick Gallery
Lyn Asselta, Judge
September 19-November 17, 2019
Awards Reception November 1, 2019**

Important Dates:
9/16/19 Dropoff paintings 11-12 pm
9/19/19 Public Reception 6-8 pm
11/1/19 Awards Reception 6-8 pm
11/18/19 Pickup unsold paintings 11-12 pm

WELCOME NEW MEMBERS!



Sallie Halley
Leora LaGrafte
Elizabeth Rice
Jill Smithson



UPCOMING EXHIBITS

**Uptown Gallery
4th Annual Judged Exhibit
Rita Kirkman, Judge
Fall 2020**

PASTEL WORKSHOP WITH LYN ASSELTA

Lyn Asselta: Exploring the Expressive Landscape

November 1-3, 2019

Hampton Inn & Suites Richmond/Virginia Center
1101 Technology Parkway, Glen Allen, VA 23059
Richmond, Virginia



"The Last Gasp" by
Lyn Asselta

THIS WORKSHOP IS NOW FULL, BUT YOU MAY STILL REGISTER FOR OUR WAITLIST

*We are accepting registrations from **MAPS MEMBERS ONLY** until May 1, 2019. If you'd like to become a member, [click here to go to our Membership page](#).*

"Exploring the Expressive Landscape"

A 3-day studio pastel landscape workshop with Lyn Asselta PSA, IAPS EP

In this fun, fast-paced workshop, we'll explore ways to create more effective, expressive landscape paintings by focusing on things like intent, mood, composition, color and atmosphere. Painting is so much more than just copying a photograph or trying to draw what we see in front of us! Using lots of short painting exercises along with a few longer painting sessions, you'll find new tools to help you make better decisions while you paint. Even more importantly, you'll learn new ways to think about your painting process. Be prepared to stretch your brain as well as your painting muscles!

About Lyn Asselta Lyn is a Signature Member of the Pastel Society of America (PSA), an International Association of Pastel Societies (IAPS) Eminent Pastelist, a member of the Salmagundi Club, the Eastern League of Professional Artists and American Women Artists. She is the founder of the First Coast Pastel Society (FL) and is a Member of Excellence of the Southeastern Pastel Society. Her award-winning paintings have appeared in shows and exhibitions throughout the United States, and in invitational exhibitions in France and China. In 2009, Lyn had the honor of being an Artist in Residence for the National Park Service at Acadia National Park in Maine. Her work was featured in the February 2016 issue of Pastel Journal magazine and her painting "Blue Morning, Crescent Beach" appeared on its cover. She has also been featured in Pratique des Arts magazine and Plein Air magazine. In 2018, Lyn published her first book, Seeing the Landscape, a collection of her paintings and prose. Lyn travels extensively to teach both studio and plein air pastel landscape workshops.

Living and painting in the nation's oldest city, Saint Augustine, Florida, Lyn's work is represented by Cutter & Cutter Fine Art, St. Augustine and Ponte Vedra, FL. She is a Unison Colour Associate Artist, representing Unison handmade pastels. Lyn also has developed four signature pastel sets for Jack Richeson & Company, which can be purchased through links available on her website. To learn more about Lyn, visit her website at lynasselta.com.



PASTELS WORKSHOP WITH EMILY CHRISTOFF

Pastel Portraits Using the Verdaccio Method September 7, 2019

Hampton Inn & Suites Richmond/Virginia Center
1101 Technology Parkway, Glen Allen, VA 23059
Richmond, Virginia



“Listening to Mozart”
by Emily Christoff

Go to our website www.midatlanticpastelsociety.com/workshops.html to register

Students will learn about the fundamental materials and techniques for drawing portraits in pastel pencil on tinted sanded paper, using a process called “Verdaccio”.

Verdaccio is an underpainting technique which originates from the Italian fresco painters of the early Renaissance. Green is the complementary color to red and placing these two hues close together or on top of each other in a painting can create dynamic effects. We will be using dry pastel pencils instead of oil paint. The combination of using a green base and many light layers of pastel creates a luminosity to the skin. Emily will provide the 11 x 14” photos for this workshop to enhance the focus on learning this method.

About Emily Christoff When Emily draws she listens to the music that has had the most impact on her life. This music inspires her to create pieces where the viewer can feel her own personal emotional response to song. Painting the figure immersed with a decorative patterned background represents the spirit becoming submerged in the phenomenon of music. She also believes that the mingling of photo-realism with decorative elements plunges the viewer into a deeper state of consciousness. Her intention is to first seduce the viewer with her technique, then catch them unaware by the story of the piece, which is autobiographical in nature. The viewer is then thrust into a mysterious narrative in which there is significant information, but not quite enough clues to finish the story. She wishes for them to create their own fantasy conclusion about what she personally experiences when listening to music.

Emily received her Bachelor’s in Fine Art from Bowling Green State University in Ohio where she focused on life drawing. While still in art school, she began selling portraits as a career. She has taught portraits since 1984 and continues to support herself with portrait commissions and teaching privately. She currently teaches pastel classes at the Charles H. Taylor Arts Center, teaches pastel workshops and teaches privately from her home studio in Newport News, Virginia. Emily's work has been honored national exhibits, including the 2016, 2017 and 2018 Pastel Society of America Enduring Brilliance exhibits and the 2018 IAPS web show, and her pastel work was published in "Strokes of Genius 10: Best of Drawing". She is a member of many art organizations including MidAtlantic Pastel Society, Portrait Society of America, International Guild of Realism and a Signature member of Pastel Society of America. To learn more about Emily, visit her website at emilychristoff.com.



2019/20 EXECUTIVE BOARD

OFFICERS

President: Carol Cullinan
VP/Program Chair: Janet Visser
Treasurer: Sheila Chandler
Secretary: Kathy Green

COMMITTEE CHAIRS

Membership: Shavon Peacock
Workshops: Joan Dreicer
Exhibits: "Volunteers needed"
Hospitality: Regina Tune
Technology: Elizabeth Hood
Newsletter: Vickie Knick

* * * * *

"I am seeking. I am striving. I am in it with all my heart."

Vincent Van Gogh

* * * * *

MEMBER NEWS

Betsy Kellum's painting, "Dried Roses & River Rocks", was selected for the FAV 15% in the July 2019 BOLDBRUSH Competition. Fine Art Studios Online (FASO).



Maria Reardon's pastel painting, "Cloud Shapes over the Valley", received Best in Show at the 55th Annual Bath County Art Show.



CLASSES AVAILABLE

Pastel Painting & Drawing With Linda Wolitz

Tues., Sept. 10-Nov. 12, 2019, 2-4 pm
Wed., Sept. 11-Nov. 13, 2019, 2-4 pm
Thurs., Sept. 12-Nov. 14, 2019, 7-9 pm
\$200 per session
The Cultural Arts Center at Glen Allen
For complete information and how to register:
www.artsglenallen.com

* * * * *

Painting Animals in oil or pastel With Betsy Kellum

3-Day Workshop Oct. 25-27, 2019, 9:30am-3:30pm
\$250.
Independence Golf Club, Art for the Journey Studio,
Midlothian, VA
To Register: Deposit \$100. Reserves your spot. Balance due when activities begin.
For additional information or questions contact
betsykellum@gmail.com or 804-399-4877
website: <https://www.betsykellum.com>

ART RESOURCES LINK ON MAPS WEBSITE

We have a new page on our website with links to art resources of interest to MAPS members: <https://www.midatlanticpastelsociety.com/art-resources.html>.

MEMBER NEWS

Have something artfully newsworthy you wish to share, please email Vickie Knick @ vknick30@gmail.com, or see link on our website, www.midatlanticpastelsociety.com